

This is the final part of three sets of bugs which were taught at the Palmetto Tat Days in 2005. I am hoping that the three sets will provide useful teaching tools for tatters. Although not all techniques are covered - many are. If you wish to use these for teaching purposes I would be grateful for all feedback and comments. Please ask before using by [emailing me](#).



**Pattern I - Lacewing**   **Pattern J - Mantisbug**   **Pattern K - Weary gig**   **Pattern L - Beaded flutterfly**

The final set of four patterns progress from split rings with very long picots which are re-tensioned and a tail with an unusual tail (I). The mantis has rings on the second side of lopsided split rings which also have Victorian 'sets'. Also in this bug there are chains which are added in later where a marker thread has been added while the body is being worked (J). The third bug uses split rings with the introduction of floating chains (K). The beaded butterfly (L) is very similar to a doodle which is already on my site. This introduces the Self Closing Mock Ring and also has Victorian 'sets' and very long picots - instructions for adding beads to long picots is also given. Two of these bugs have beads in place of picots for eyes, one has a bead in the centre of the Victorian 'sets'.

### Abbreviations

Wsh1	Working shuttle 1	Wsh2	Working shuttle 2
vsp	Very small picot	Vlp	Very Long Picot
+	join	B	bead moved into place
seta	four first half ds	setb	four second half ds
T & C	Tie and Cut	CTM	Continuous thread method

**Lacewing – Pattern I** is made up of a normal ring for the head with beads in place of picots for eyes. The body is split rings, with long picots joined later & re-tensioned when completed. There is an unusual chain for the tail.

2 shuttles with 2 beads for eyes on Wsh1

#### Head

R1: 6 B 2 Vlp(1") 2 B 6

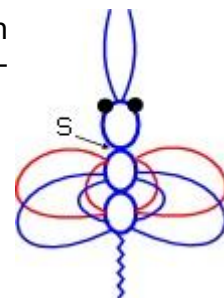
#### Body

SR2: 3 Vlp(1") 2 Vlp(1") 3 / 3 Vlp(1") 2 Vlp(1") 3

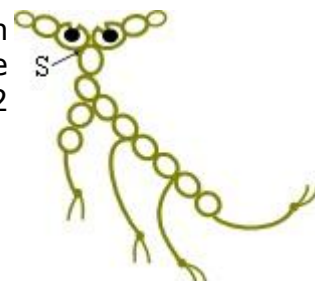
SR3: 3 +(1<sup>st</sup> Vlp on SR2 taking p **OVER** 2<sup>nd</sup> Vlp) 2 +(2<sup>nd</sup> Vlp SR2) 3 / 3 +(1<sup>st</sup> Vlp p of SR2 taking p **OVER** 2<sup>nd</sup> Vlp) 2 +(2<sup>nd</sup> Vlp SR2) 3 Adjust double p's see picture above.

Ch: \*2 (normal ds) 2 (unflipped ds) tension each pair while working

Repeat from \* 3 times followed by 2 (normal) T & C. Cut Vlp on R1 to form feelers.



**MAN a-bug! – Pattern J** is a mantis look-a-like and is worked mainly in split rings with rings thrown off split rings. Marker threads are laid in while working for adding the legs later. Victorian sets are used for the tail. 2 shuttles with 2 beads for eyes on Wsh2.



Head

SR1: 1 / vsp 8 RoSR(4 – 4) 3 seta B setb 3

SR2: 1 / 3 seta B setb 3 RoSR(4 – 4) 8

SR3: 2 +(vsp SR1) 4 / 6

SR4: 3 / 6

Add in marker thread #1 on Wsh2 thread

SR6: 6 / 6

SR7: 6 / 6

Place in marker thread #2 on Wsh2 thread

SR8: 6 / 6

SR9: 6 / 6

Place in marker thread #3 on Wsh2 thread

SR10: 6 / 6

SR11: 6 / 6 Change to Wsh2

Ch: \* seta setb repeat from \* 5 more times T & C

**Legs** are attached where marker threads have been laid in. For each leg wind about 1 yard onto Wsh2 CTM. Pull through shuttle thread at marker thread & make a larks head join, posting both ends through loop formed (see illustration). Turn work so that legs to be worked are on the right.

**Top Leg** Using lower shuttle as Wsh1 & head facing down

SR12: 6 / 6

SR13: 6 / 6

Ch: 12 T & C

**2nd & 3rd leg** worked the same using lower shuttle but with head upright

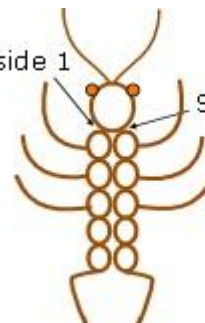
Ch: 8 T & C



**Weary gig - Pattern K** is an earwig with attitude! This bug uses split rings & floating chains. Helper threads are used for the floating chains to make them easier to hold. A double thread is added at the point where the chain is started and a single knot tied in the working thread to hold the position. See diagram. 2 shuttles with 2 beads on Wsh1 for eyes which take the place of picots.

Start side 1

Start side 2



**Head** using Wsh1

R1: 3 B 2 Vlp(1") 2 B 3 vsp 4

**Left Body**

SR2: 3 vsp 3 / 3 change to Wsh2 and measure out a 3/4" distance along the thread. At that point add the helper thread and then start tatting back along the 3/4" space working as you would for the second half of a split ring (no flip). This makes a chain of 10 working back towards the SR. Complete SR2 with 3 ds.

SR3: 3 vsp 3 / 3 Make floating chain as before and finish SR3 with 3ds.

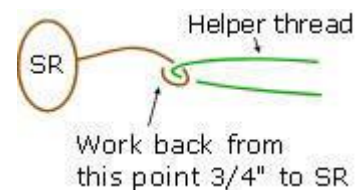
SR4: 3 vsp 3 / 3 Make floating chain as before and finish SR4 with 3ds.

SR5: 3 vsp 3 / 6

SR6: 3 vsp 3 / 6 Change to Wsh2

Ch: 3 Change to Wsh1

Ch: 6 T & C



**Right body** - 2 shuttles. With the head facing down and side 1 on the left, join to vsp on R1 -

using Wsh1

SR1: 3 +(vsp SR2 on side 1) 3 / 3 Make floating chain as in SR2 (side 1) and finish SR with 3ds.

SR2: 3 +(vsp SR3 on side 2) 3 / 3 Make floating chain as before and finish SR2 with 3ds

SR3: 3 +(vsp SR4) 3 / 3 Make floating chain as before and finish SR3 with 3ds.

SR4: 3 +(vsp SR5) 3 / 6

SR5: 3 +(vsp SR6) 3 / 6 Change to Wsh2

Ch: 3 Change to Wsh1

Ch: 6 T & C

Finishing Cut centre of long picot for antennae

**Beady Flutterfly – Pattern L** (similar to doodle K on my site) is made from a Self Closing Mock Ring (SCMR) with beads added over long picots & in the centre of Victorian sets. 2 shuttles with 11 beads on Wsh2. 14 beads are needed to add to Vlp's.

SCMR1: 4 R[10 Vlp with BBBB (add 7B's on thread at back of hand & contain with safety pin – see diagram below) 2 seta B setb 2+Vlp (removing safety pin - see last diagram) 8 - 2] 2 R[2 +(p last R) 4 BBB 6] 4 BBB 4 [6 BBB 4 - 2] 2 [2 +(p last R) 8 Vlp(add 7B's as before) 2 seta B setb 2 +(Vlp as before) 10] 4 Close SCMR

SR2: 6 / 6 T & C leaving ends for feelers.

