

Fig. 1



Fig. 2

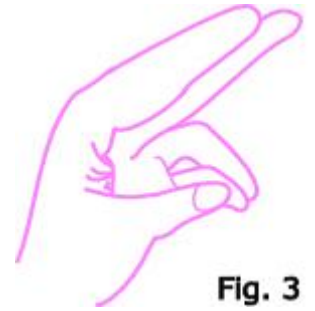


Fig. 3

Change left hand position so that forefinger and middle finger are together (or position clamp here instead) and the pinky and thumb and ring finger are together.

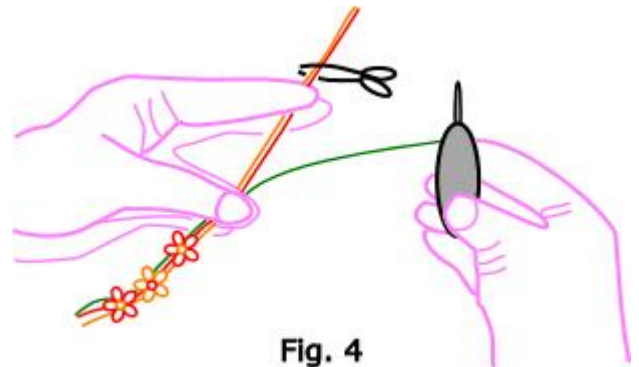


Fig. 4

Remember that you must keep the working thread (between your forefinger and middle finger) taut. Do not let it relax. Do not let the loop be transferred. Instead pull the shuttle thread gently down towards the bottom of the loop until it is in position next to the first stitch of the ring.

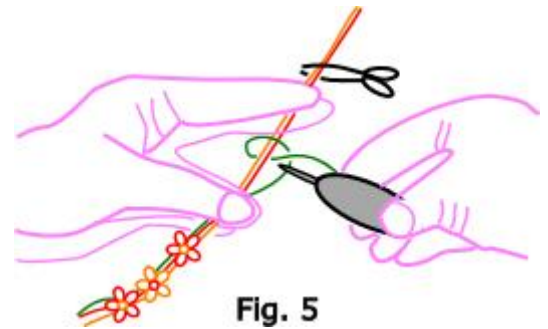


Fig. 5

In order that the second half of the split ring have the appearance of being right-side up, you begin with the second half of the double stitch. Thus when encapsulating threads in this manner, it may also be necessary to alter the half-stitch order as you change directions.

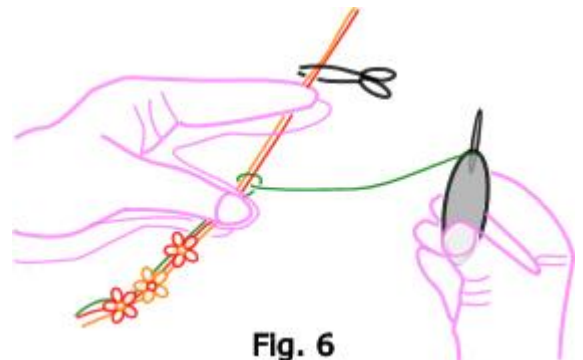


Fig. 6