

Materials:

1 bead for eye. No. 20 thread in white, tan and dirty orange (for legs and beak). A knowledge of SCMR (there's only 1) and SR with rings on.



[Click for larger picture](#)



[Click for larger picture](#)

Abbreviations

Wsh1	Working shuttle 1	Wsh2	Working shuttle 2	T & C	tie and close
SR	split ring	RoSR	Ring on split ring	vsp	very small picot
Lp	long picot	LJ	Lock join	Btwn	between
SLT	Shoe Lace Trick (tie knot)	SCMR	self closing mock ring		

Wing – 2 shuttles**Row 1 – Wsh1**

R1: 2 – 2 – 2 – 2

SR2 – SR8: 2 – 2 / 2 – 2 change to Wsh2

Ch: 3 – 3 Rw

Row 2

SR9: 3 + (SR8) 3 / 3 – 3

SR10: as SR9 joining to p on SR7

SR11: as SR9 joining to p on SR6

SR12: 3 + (SR5) 3 / 3 RoSR (2 – 2) 3

SR13: 3 + (SR4) 3 / 3 RoSR (3 – 3) 3

SR14: as SR13 joining to SR3

SR15: as SR12 joining to SR2

SR16: 3 + (R1) 3 / 3 – 3 change to Wsh1

SCMR: 8 (R 5 – 5 Cl) 4 – 4 Cl Rw

Row 3

SR17: 2 + (SR16) 6 / 4 – 4

SR18: 4 + (RoSR on SR15) 4 / 4 – 4

SR19: 3 / 2 – 2

SR20: as SR18 joining to RoSR on SR14

SR21: 3 / 3

SR22: as SR18 joining to RoSR on SR13

SR23: as SR18 joining to RoSR on SR12

SR24: 4 + (SR11) 4 / 4 – 4

SR25: as SR24 joining to SR10

SR26: as SR24 joining to SR9 Rw

Ch: 3 – 3 T & C to base of SR9 See fig. 1

Lower Neck section – 2 shuttles

R1: 3 – 3 Lp (¼") 3 – 3

Ch: vsp 4 + (Ch btwn SR26 & SR9 on wing) 4

R2: 3 + (3rd p of last R) 3 + (Lp of last R) 3 – 3

Ch: 4 + (Ch btwn SR8 & SR9 on wing) 4

SR3: 3 + (last p R2) 3 + (Lp on R1) / vsp 3 – 3 Rw

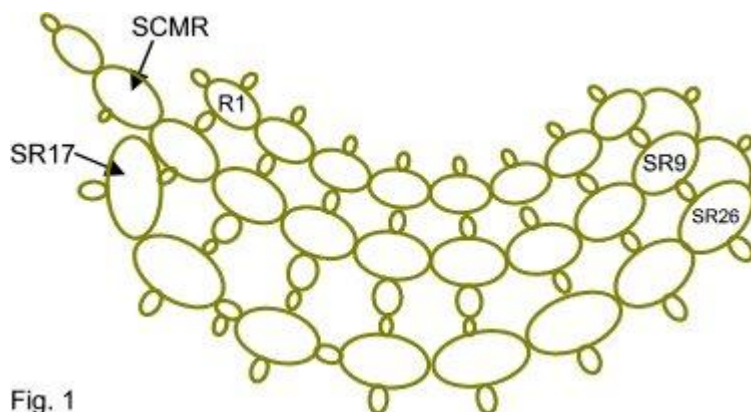


Fig. 1

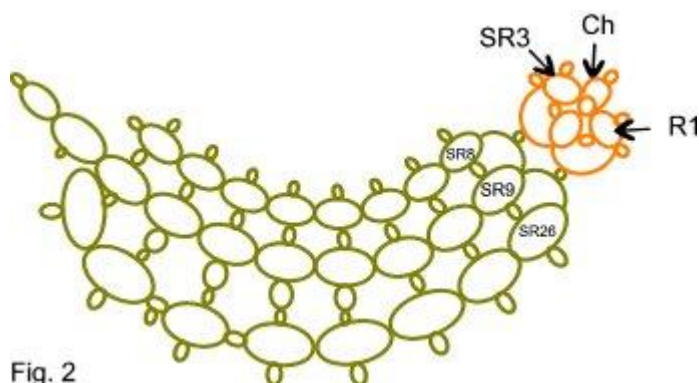


Fig. 2

Ch: 4 – 4 T & C to Lp on R1 See fig. 2 above

Outer Body – 2 shuttles

+ 3rd p on R1 of wing

Ch: 4

R1: 2 + (SR2 of wing) 1 – 1

Ch: 4

R2: 2 + (R1) 2 + (SR3 of wing) 2 – 2

Ch: 6

R3: 3 + (R2) 3 + (SR4 of wing) 2 + (SR5 of wing) 3 – 3

Ch: 6

R4: 3 + (R3) 3 + (SR6 of wing) 2 + (SR7 of wing) 3 – 3

Ch: 6

R5: 3 + (R4) 3 + (SR8 of wing) 3 – 3

Ch: 6

R6: 2 + (R5) 2 + (vsp on SR3 of lower neck section) 2 – 2

Ch: 4 LJ (last p R6)

R7: 3 + (p on SR3 of lower neck) 2 – 2 – 2

Ch: 3

R8: 3 + (last p R7) 3 – 3 – 3

Ch: 4

R9: 3 + (R8) 3 – 3 – 3

Ch: 5

R10: 3 + (R9) 2 – 2 – 3

Ch: 5

*R11: 2 + (3rd p of last R) 2 – 2 – 2

Ch: 5

Repeat from * three times

R15: 3 + (3rd p of last R) 3 – 3 – 3

Ch: 3

SR16: 3 + (3rd p of last R) 3 – 3 / 3

Ch: 6

R17: 3 + (last p of last R) 3 – 3 Lp (to take eye B) 3

Ch: 6

SR18: 3 + B (3rd p on R17) 3 / 3 vsp 3

Ch: 4

R19: 4 + (2nd p on R17) 4 + (2nd p on R15) 4

Ch: vsp 6

SR20: 4 + (R15 & R19) 2 / 2

Ch: 2 LJ (R14) 3 LJ (R13) 4 LJ (R12) 5 LJ (R11) 5

R21: 2 + (R10) 2

Ch: 6

R22: 3 + (R9) 3

Ch: 6

R23: 4 + (R8) 4 + (R7) 4 + (Ch on lower neck section) 4

Ch: 8

R24: 8 + (R1 of lower neck) 4 – 4

Ch: 8

R25: 4 + (R24) 4 + (vsp at start of first chain of lower neck section) 4 – 4

Ch: 10

R26: 4 + (R25) 6 + (Ch 1 of lower neck section where it joins the wing) 6 – 4

Ch: 8

R27: 4 + (R26) 4 + (SR26 of wing) 4 – 4

Ch: 8

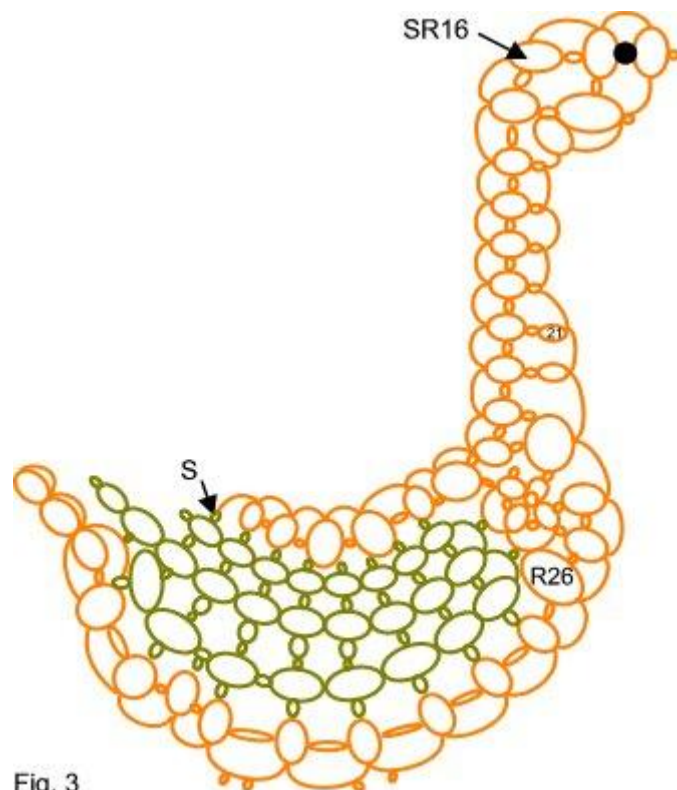


Fig. 3

R28: 4 + (R27) 4 + (SR25 of wing) 4 - 4
 Ch: 8
 R29: 4 + (R28) 4 + (SR24 of wing) 4 - 4
 Ch: 8 vsp 2
 R30: 4 + (R29) 4 + (SR23 of wing) 4 - 4
 Ch: 2 vsp 8
 R31: 4 + (R30) 4 + (SR22 of wing) 4 - 4
 Ch: 4 vsp 2 vsp 4
 R32: 4 + (R31) 4 + (SR20 of wing) 4 - 4
 Ch: 8
 R33: 4 + (R32) 4 + (SR19 of wing) 4 - 4
 Ch: 10
 R34: 4 + (R33) 4 + (SR18 of wing) 4 - 4
 Ch: 8
 SR35: 4 + (R34) 4 + (SR17 of wing) 2 vsp 4 / 6
 Ch: 8
 R36: 6 + (vsp on SR35) 6
 SR37: 8 / 8
 SR38: 6 / 6 Rw
 Ch: p 8 LJ (gap btwn SR38 & SR37) 8 + (gap btwn SR37 & SR36) 4 + (vsp on SCMR of wing) 4 + (p joining SR35 & SR17 of wing) T & C

Beak – 2 shuttles.

This is made of a chain of graded picots starting from 3/10" down to a vsp.

Holding the body upside down, join thread to vsp on SR18 of main body. With Wsh1 make a chain of

Ch: 1 - 1 - 1 - 1 - 1 - 1 - 1 - 1 - 2 SLT & change to Wsh2

Ch: 1 + (last p of 1st part of Ch) 1 + (next p on 1st part of Ch) continue until all 8 p's have been joined 4 + vsp on Ch after R19 on neck. T & C

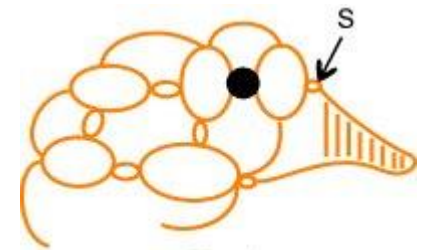


Fig. 4

Front Leg – 2 shuttles

R1: 6 + (vsp on Ch btwn R's 31 & 30 on body) 2 + (vsp on Ch btwn R's 29 & 30 on body) 6

SR2: 4 / 4

SR3: 2 vsp 2 / 4 Rw

Ch: vsp 3 LJ (vsp on SR3) 1

R4: 2 - 2

Ch: 1

R5: 2 - 2

Ch: 1

R6: 2 - 2 Change to Wsh2

Ch: 4 + & T & C to vsp on Ch following SR3

Back Leg – as Front but joining to p's on Ch btwn R's 31 & 32

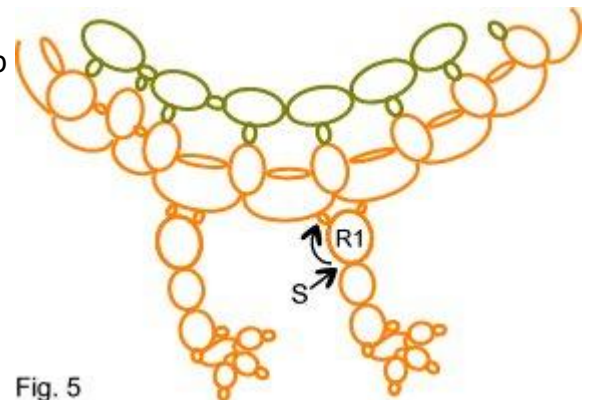


Fig. 5

As usual, please contact me if you need any help with this pattern, or find any mistakes!! [Email address.](#)