



[Click here for larger picture](#)



[Click here for larger picture](#)

The meercat is worked in two parts - the tail, body and legs in the first part and the head to finish. He/she measures roughly 5" in height by 3" across when worked in a no. 20 thread. Three beads are required for the eyes and nose.

### Abbreviations

R	ring	Ch	chain
- or p	picot	SR	split ring
/	after the / make 2nd half of SR	B	move bead in place of p
Lj	join made with shuttle thread	vsp	very small picot (smallest you can make)
RoSR	ring on split ring	+	join
T & C	Tie and cut	Cl	close
DNRW	Do not reverse work	S	start
SS	Switch shuttles	SCMR	Self Closing Mock Ring
Mb	move bead on core thread next to base of R, SR or double		

### Tail

SR1: 5 vsp 1 / 7 Cl  
 SR2: 1 + (vsp SR1) 3 vsp 1 / 6 Cl  
 SR3: 1 + (vsp SR2) 3 vsp 1 / 6 Cl  
 SR4: 1 + (vsp SR3) 3 vsp 1 / 6 Cl  
 SR5: 1 + (vsp SR4) 4 vsp 1 / 7 Cl  
 SR6: 1 + (vsp SR5) 4 vsp 1 / 6 vsp 1 Cl  
 SR7: 1 + (vsp SR6) 4 vsp 1 / 1 + (vsp SR6) 5 vsp 1 Cl

### Back of body

SR8: 1 + (vsp SR7) 4 / 1 + (vsp SR7) 4 - 4 - 4 Cl DNRW SS  
 Ch: 4 Rw  
 R9: 4 + (2<sup>nd</sup> p SR8) 4 - 4 - 4 Cl Rw  
 \*Ch: 8 Rw  
 R10: 4 + (3<sup>rd</sup> p last R) 4 - 4 - 4 Cl Rw  
 Repeat from \* twice  
 Ch: 8 Rw  
 R13: 4 + (3<sup>rd</sup> p last R) 4 - 2 - 6 Cl Rw  
 \*Ch: 3 Rw  
 R14: 2 - 2 Cl Rw Repeat from \* 3 times  
 Ch: 3 DNRW SS  
 RoCh18: 3 - 3 Cl DNRW SS  
 Ch: 3 Rw  
 SR19: 2 + (R17) 4 + (R16) 6 / 6 Cl Rw

### Front Leg

Start block tatting

Ch1: 3 vsp 4 Lj (R16)  
 Ch2: 1 vsp 4 Lj (Ch1)  
 Ch3: 1 vsp 4 Lj (Ch2)

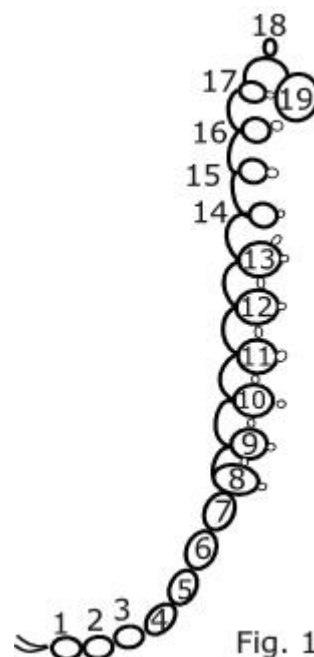


Fig. 1

Ch4: 1 + (R15) 1 vsp 4 Lj (Ch3)  
 Ch5: 1 vsp 4 Lj (Ch4)  
 Ch6: 1 + (R14) 3 + (last p R13) 1 vsp 4 Lj (Ch5)  
 Ch7: 1 vsp 4 Lj (Ch6)  
 Ch8: 1 vsp 4 Lj (Ch7)  
 Ch9: 1 vsp 4 Lj (Ch8)  
 Ch10: 1 vsp 4 Lj (Ch9)  
 Ch11: 3 vsp 3 Lj (Ch10)  
 Ch12: 1 vsp 3 Lj (Ch11)  
 Ch13: 3 vsp 2 Lj (Ch12)  
 Ch14: 2 Rw

RoCh20: 2 Lp 1 Lp 2 Cl Rw  
 Ch14 continued: 2 Lj (Ch13)

Continue chain which takes the worker back along the top of the front leg.

Ch: 6 Lj (vsp Ch11) 4 Lj (vsp Ch9) 2 Lj (vsp Ch7) 1 Lj (vsp Ch5) 2 Lj (vsp Ch3) 1 vsp 1 Lj (vsp Ch1) 3 Lj (base SR19) SS

### Front of body

SR21: 4 - 4 / 4 - 4 Cl SS

Ch: 8

R22: 4 + (SR21) 4 + (vsp on return Ch on arm) 4 - 4 Cl Rw

Ch: 8

R23: 4 + (R22) 8 - 4 Cl Rw

Ch: 8

R24: 4 + (R23) 4 + (R13 taking ring over the arm - check with picture) 4 - 4 Cl Rw

Ch: 8

R25: 4 + (R24) 4 + (R12) 4 - 4 Cl Rw

Ch: 8

R26: 4 + (R25) 4 + (R11) 4 - 4 Cl Rw

Ch: 8 Rw

R27: 4 + (R26) 4 + (R10) 4 - 4 Cl Rw

Ch: 8 Rw

R28: 4 + (R27) 6 + (R9) 6 - 6 Cl Rw

Ch: 10 Rw SS

SCMR29: 4 + (R28) 2 SS

R: 3 + (R8) 3 Cl SS

SCMR29: 4 - 4 Cl Rw SS

### 1<sup>st</sup> Back Leg

Start block tatting

Ch1: 4 vsp 4 Lj (SCMR29)

Ch2: 1 vsp 4 Lj (Ch1)

Ch3: 4 vsp 3 Lj (Ch2)

Ch4: 1 vsp 3 Lj (Ch3)

Ch5: 4 vsp 2 Lj (Ch4)

Ch6: 1 vsp 2 Lj (Ch5) Rw SS

Ch7: 3 vsp 3 Rw

R30: 3 Lp 1 Lp 3 Cl SS

Ch: 4 Lj (vsp last Ch) 4 Lj (vsp Ch6) 2 Lj (vsp Ch4) 2 Lj (vsp Ch2) 3 Lj (p SCMR29) 2 vsp 3 Lj (p R8)

### 2<sup>nd</sup> Back Leg

Start block tatting

Ch1: 3 vsp 3 Lj (last Ch)

Ch2: 1 vsp 3 Lj (Ch1)

Ch3: 3 vsp 3 Lj (Ch2) Rw SS

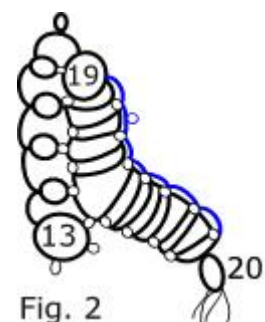


Fig. 2

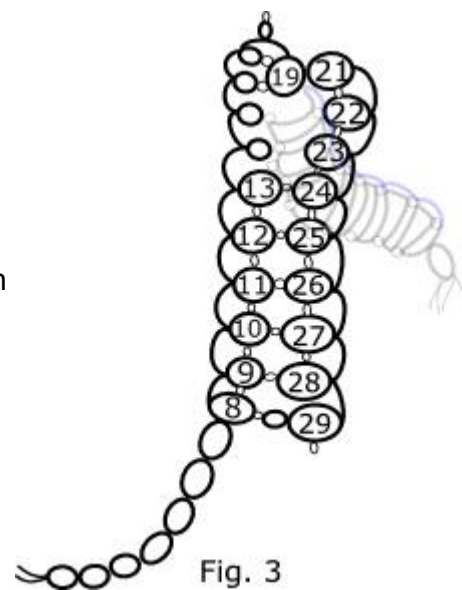


Fig. 3

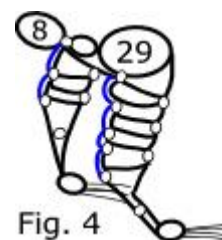


Fig. 4

Ch4: 3 vsp 3 Rw

R31: 2 Lp 1 Lp 2 Cl SS

Ch: 4 Lj (vsp last Ch) 3 Lj (Ch4) 4 Lj (Ch1) 5 T & C to p on R8

### Face- facing left

Using 2 shuttles with 3 beads on Sh1 – join threads to base of SR21 holding work with the tail on the left and facing downwards.

Ch: 8 Rw

R1: 3 + (SR21) 3 vsp 6 Cl DNRW

SR2: 4 / 4 Cl

SR3: 3 / 3 Cl SS

Ch: vsp 5 Lj (space btwn SR2 & SR3) Rw SS

Ch: 8 Lj (vsp last Ch) Rw SS

SR4: 3 vsp 2 / 4 Cl Rw

Ch: 4 Rw Move B to back of hand

R5: 2 + (SR4) 2 B 2 vsp 2 Cl Rw

Ch: 4 Rw

R6: 2 + (R5) 2 vsp 2 Cl Rw

Ch: 4 Rw Move B to back of hand

SR7: 2 + (R6) 1 B 1 / 3 Cl Rw

Ch: 6 Rw

R8: 2 vsp 2 Cl Rw

Ch: 1 MB 4 Rw

R9: 2 + (R8) 2 Cl Rw

Ch: 6 Rw

SR10: 4 / 2 + (RoCh18) 2 Cl

SR11: 4 / 4 Cl + (R1) T & C

### Face - facing right (courtesy of Pamela Myers)

Using 2 shuttles with 3 beads on Sh1- join threads to picot on R18

SR1: 4 / 4

SR2: 3 / 3

SR3: 6 / 6 Rw

Ch: 6

R4: 2 vsp 2 Rw

Ch: 4 MB 1

R5: 2 + 2

Ch: 6 move bead to back of hand

SR6: 1 B 1 vsp 2 / 3

Ch: 4

R7: 2 + 2 vsp 2

Ch: 4

R8: 2 + 2 B 2 vsp 2

Ch: 4

SR9: 2 + 3 / 4

SR10: 3 / 3 SS

Ch: vsp 5 Lj into space between SRs 9 and 10 Rw SS

Ch: 8 Lj into vsp last Ch

SR11: 4 / 4 Cl + ( R18 ) T & C

For further help or if you find any mistakes [please email me](#).

